



AML21BBA2BA



AML21 Series, Electronic Control Pushbutton, Square, Standard Bezel, Unlighted, SPDT, Momentary Action, Snap in panel mount

Features

- 1, 2, or 4 poles.
- Silver or gold contacts.
- Full guard bezel option.
- Momentary or 2-level alternate action (push-on, push-off).
- UL recognized, CSA certified.
- Lamps can be furnished installed or ordered separately.
- Lamp circuit independent of switch circuit.

Notice

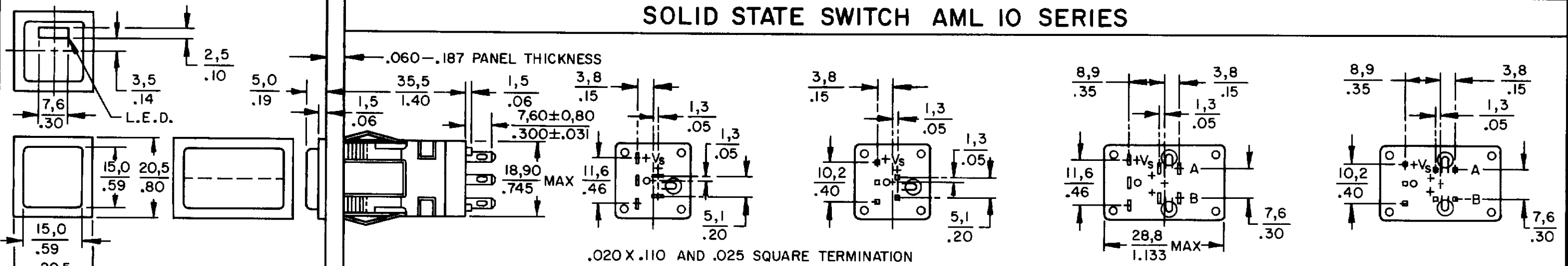
Button caps for MICRO SWITCH™ AML Pushbuttons are sold separately. Please see the links at the left for information on the buttons caps and other AML accessories.

Product Specifications	
Product Type	MICRO SWITCH™ Pushbutton
Housing Type	Square
Circuitry	SPDT
Action	Momentary Action
Mounting	Snap-in Panel
Lamp Type	Unlighted
Termination	.110 x .020 (Solder or Quick-Connect)
Ampere/Voltage Range (Resistive Load)	0.01-0.1 A @ 0.5-24 Vdc
LED/Lamp/Neon Voltage	No Lamp Installed
Comment	use AML51 button
Availability	Global
UNSPSC Code	30211913
UNSPSC Commodity	30211913 Push button switches

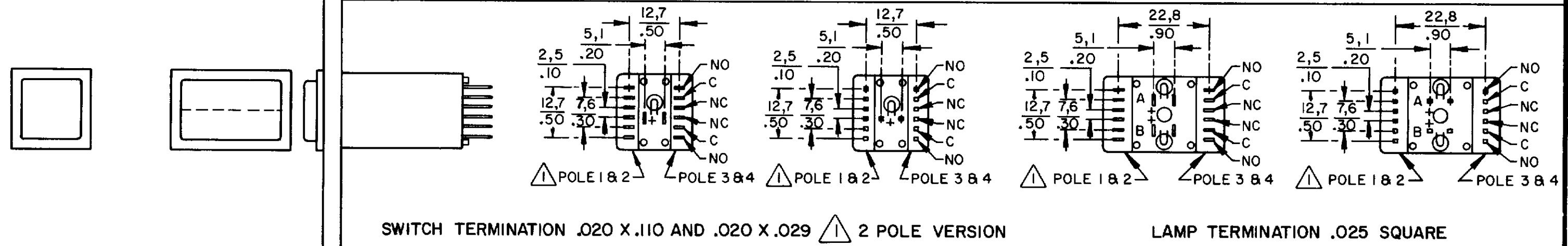
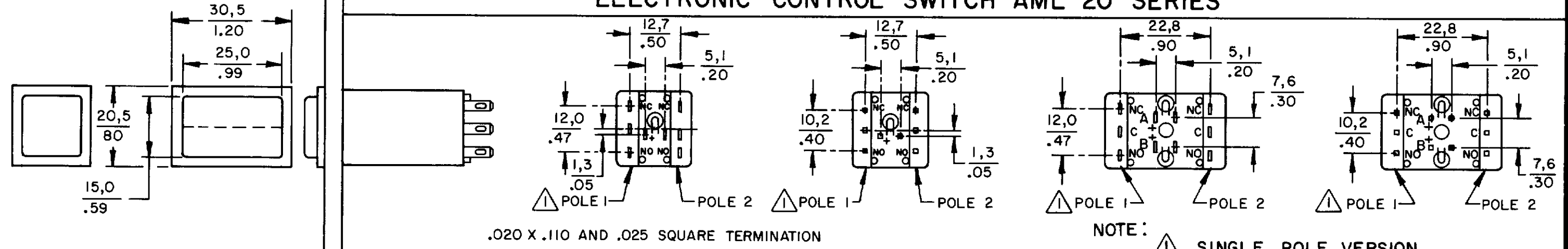
Series Name	AML21
-------------	-------

AML PUSHBUTTON AND INDICATOR SERIES

SOLID STATE SWITCH AML 10 SERIES

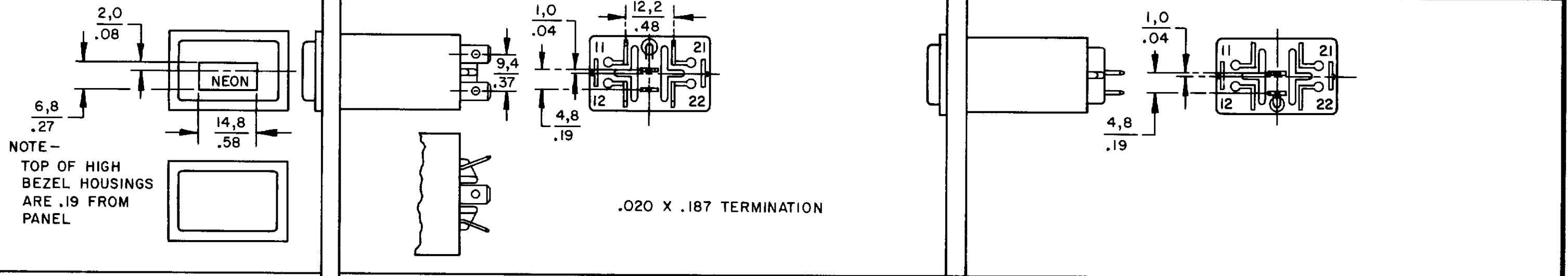


ELECTRONIC CONTROL SWITCH AML 20 SERIES

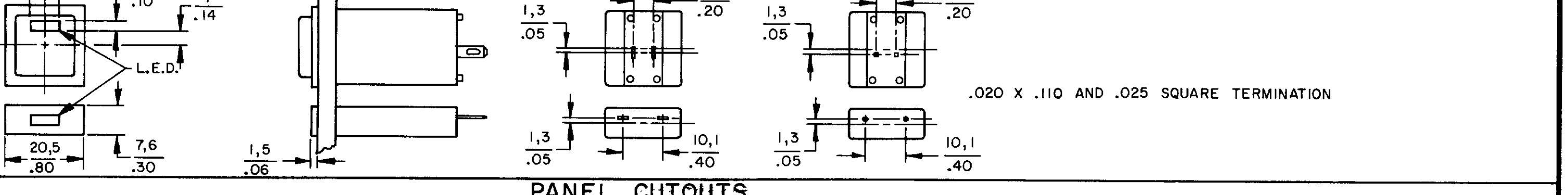
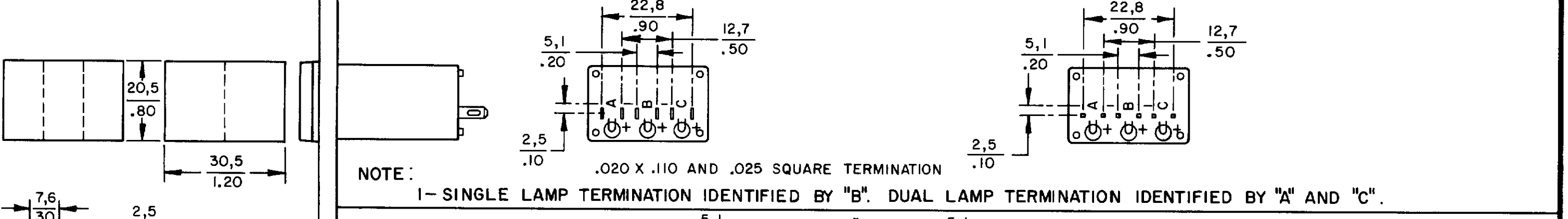
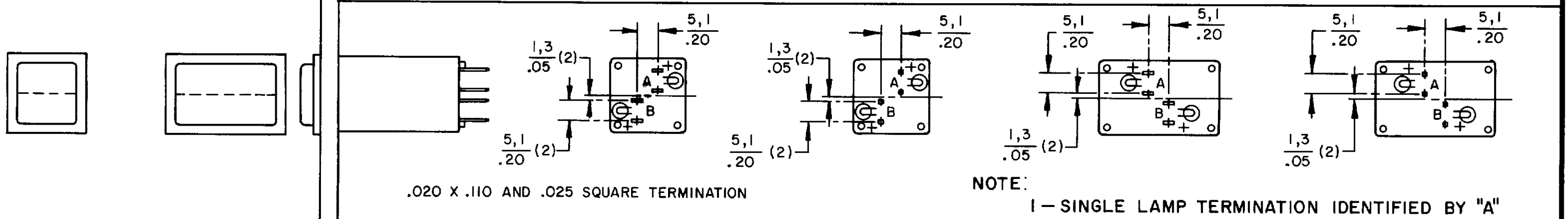


POWER SWITCH AML 30 SERIES

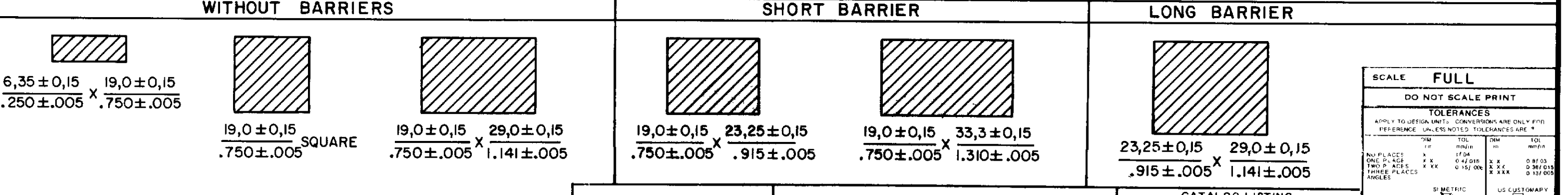
LINE POWER IND AML 43 SERIES



INDICATORS AML 40 SERIES



PANEL CUTOUTS



SCALE FULL	
DO NOT SCALE PRINT	
TOLERANCES	
APPLY TO DESIGN UNITS. CONVERSIONS ARE ONLY FOR REFERENCE. UNLESS NOTED, TOLERANCES ARE:	
NO PLACES	FRACTIONS
ONE PLACE	0.001
TWO PLACES	0.0005
THREE PLACES	0.00025
ANGLES	MINUTES
	0.0001
DESIGN UNITS	US CUSTOMARY
	METRIC
THIRD ANGLE PROJECTION	
WEIGHT	

CATALOG LISTING
AML 10 20 30 40
 PAGE 1 OF 1 SERIES CHART 1
 RELEASE NO. CO-78498 REPLACES CO-78498 & 40 SERIES
 ISSUE 6
 REVISIONS:
 A 209297 6 JUL 89
 B 201477 9 OCT 00
 C 201566 20 OCT 00
 D 201696 14 NOV 00
 E 202971 30 APR 01
 DRAWN JAK
 CHECK JAF 11 JUL 04
 17 JUN 94